



# Cosmote: 360° Digital Transformation

*Let's Accelerate Together*





# Initial Value for Customers moving to the Cloud

- **Work from anywhere, anytime from any device**
- **Focus on business and customers, not IT**
- **Save valuable resources (CAPEX to OPEX)**

# An alliance like never before



GROUP OF COMPANIES

Deutsche  
Telekom



**Local, EU & Global Competence & Delivery Network**



# COSMOTE Offerings

# COSMOTE offerings based on 2 solution pillars

Microsoft  
Modern  
Workplace

 Microsoft Azure



**Complemented with Support  
& Managed Services from OTE**



**A modern workplace can help your company to:**

- Empower remote workers , productivity & collaboration
- Better engage with colleagues & your customers
- Safeguard & protect your sensitive data
- Optimize operations & save costs
- Improve teamwork efficiency and quality

**You're 2x more likely to achieve financial over-performance when your teams work towards a common goal. Teamwork success is enabled with tools for communication, collaboration and productivity**

# Microsoft 365 Premium Support

Fast, Easy and Safe mailbox migration to Microsoft 365 Exchange Online, without downtime

- 
- Configure Microsoft 365 Tenant / subscription
  - Setting up mail flow into Microsoft 365
  - Customer assistance in Domain & records change
  - License assignment to users
  - Email Migration Assessment , Preparation, Plan
  - Email Migration Execution



*Starting at 21 euros / per user (once off cost for service delivery)  
Excluding necessary licensing costs*

# Microsoft 365 Security Pack Set up

Improve Protection and Security of data, devices, applications in your organization while empowering your employees to work in new and flexible ways.



---

## COSMOTE Standard Services

---

- Identity & access management
- Multifactor Auth. & Azure Active Directory
- Information protection , policies, tags
- Threat protection
- Anti-Malware/Anti-Virus
- Device Management
- Train the trainer for 2 hours
- Training , Handover & documentations
- “Hyper Care” - 1 week

*Starting at 50 euros / per user (once off cost for service delivery)  
Excluding necessary licensing costs*



# Cloud services for our customers

## Microsoft Cloud Services

(M365, Security, Azure, D365, Data & Analytics, IoT, App Development)

STANDARDIZED  
SERVICES

Assessment  
services

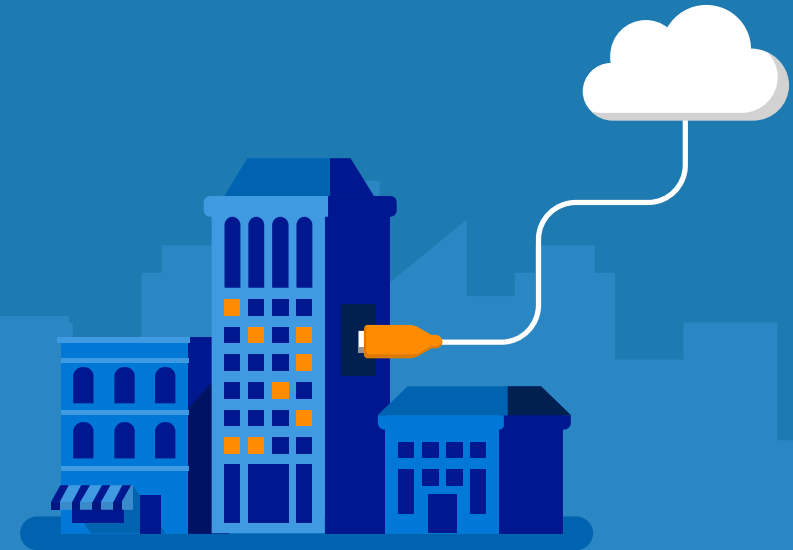
Migration  
services

Managed  
services

Automation tools

Increase business productivity

Creating value  
for customers





**WHY COSMOTE**

# Why COSMOTE is the right partner for you

34+

Microsoft Certified Professionals in COSMOTE\*

700+

Consultants in DT Group available

30,000

Physical and Virtual Desktops managed

350,000+

Mailboxes Migrated

30+

24x7x365 Global Engagements

## Suite of Services

### Consulting & Migration Services

- Assessment, Requirement Gathering
- Planning
- Deployment & Migration
- Hypercare and Handover

### Hybrid Infrastructure

- Consulting and Design Planning for Rollouts, DNS,
- firewall and proxy
- Deployment and implementation
- Network Bandwidth Planning
- Monitoring, Performance
- Management, Capacity Planning
- and Network Optimization

### M365 Tenant management

- 24x7x365 SLA based L1/L2/L3 Support
- M365 License Management
- ITSM / ServiceNow & IAM
- Integration
- Exchange & SharePoint, OneDrive migration
- Collaboration Suite management
- User Onboarding and training

### M365 Delivery & Support Services

- Support
- Incident management
- Change & Task mgmt.
- Problem Management
- Monitoring and Reporting
- Documentation



Global and Local Competence and Delivery Network

\*with 66 certifications covering Azure & Modern Workplace solution areas



**COSMOTE**